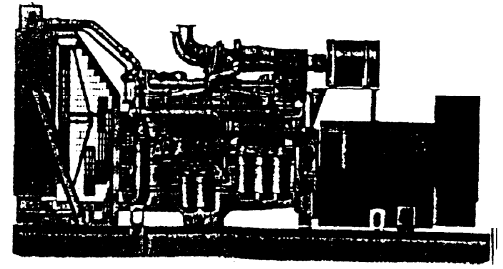


V28 SERIES

POWERED BY CUMMINS DIESEL ENGINES

康明斯发电机组技术参数



GENSET MODEL 发电机组型号		HPD28TAG5	
Frequency 频率(Hz)	60Hz	50Hz	
Rpm 转速	1800rpm	1500rpm	
Duty 功能, 用途	Standby/Prime 备用/主用	Standby/Prime 备用/主用	
Rating @ 0.8PF, 3phase, with fan 功率因数0.8, 3相, 带风扇			
In KW	600/500	550/500	
In KVA	750/625	688/625	
Average Fuel Consumption(L/hr)at Load #2-Diesel 载荷平均油耗(升/时)			
25%	57/52	48/44	
50%	91/83	80/73	
75%	128/116	116/105	
100%	176/149	156/140	
Driven by Cummins Diesel Engine Model 柴油机型号	VTA28G5		
No. of stroke per Cycle 冲程	4		
No. of Cylinder in Line 汽缸	12		
Aspiration 吸气	Turbocharged & Aftercooled 涡轮增压及增压冷却		
Type of Governor 调速器类型	EFC		
Bore & Stroke 缸径与冲程(mm)	140x152		
Displacement (L) 气缸容量(升)	28.0		
Gross Power 总功率 (KW/BHP)	671/900,560/750	612/820,556/745	
Compression Ratio 压缩比	13.1 : 1		
Total Oil System Capacity 清油系统总容量	83		
Max. Oil Consumption 最大滑油消耗(升/时)	0.50		
Heat Radiated to Coolant 冷却系统 散热(KWm)	459/382	375/340	
Heat Radiated to the Room 室内热辐射(KWm)	106/91	94/85	
Coolant Capacity with Radiator (L) 散热器冷却剂容量(升)	167	167	
Coolant Flowrate(L/min) 冷却剂流量(升/分)	874	731	
Max. Coolant Friction Head 最大冷却剂损耗压差(KPA)	35	55	
Max. Coolant Static Head (m) 最大冷却剂静压(M)	18.3		
Radiator Fan Load 散热风扇载荷(KW)	22.4		
Combustion Air (cu.m/min) 助燃空气(立方/分)	55.5/48.1	52.4/49.0	
Radiator Cooling Air (cu.m/min) 散热器冷却空气(立方/分)	1303	1246	
Regenerative Power 蓄电 (KW)	101	70	
交流发电机 Alternator			
Brushless/Self excited/Self cooling/Drip proof IP21/Single bearing/4 pole/Class H temperature rise 125C/Voltage adjustable +/-10%/Comply to NEMA, IEEE, CSA & BS standard Voltage regulation +/-0.25%/Voltage variation +/-0.5%/Frequency regulation - Isochronous/Frequency variation +/-0.25%/Harmonic distortion <0.5% total; <3% single/Telephone harmonic (TIF) < 50. Stator winding shall be of 2/3 pitch design to eliminate the third harmonic and shall incorporate a one slot skew to minimize slot harmonics/Withstand short circuit current of 300% rated for 10 sec.			
发电机类型为无刷, 自励磁, 自散热, 有屏蔽保护 IP21, 单级轴承, 4 极, 防滴漏结构, 超额工况下温升不超过 125 C, 其电压可调幅度为 +/-10%。绝缘为 H 级, 符合 NEMA, IEC, IEEE, CSA 及 BS 要求。稳压调节从空载到满载在 0.25% 内电压波动范围; 加载后, 从空载到满载不超过平均值的 +/-0.5%。频率调节: 从空载到满载均表现等时性质, 频率波动范围: 从空载到满载的各种负载情况下, 不超过平均值 +/-0.25%。交流阶波波动总量: 从空载到满载, 波动总量不超过 5%, 单个节波不超过 3%, 电话影响系数: 按 NEMA 需求 < 50, 定子: 斜定子, 2/3 间距绕组, 减少磁场发热及电压波动。发电机能承受过载 3 倍额定电流历时 10 秒。			
Electrical Output Selection Guide (12 Lead reconnectible) 输出电压选择 (12 导线 连接)	60Hz/3 phase reconnectible, broad range 60Hz/3 相专用电压/可连接 120/208V, 127/220V, 139/240V, 120/240V 240/416V, 254/440V, 277/480V	50Hz/3 phase reconnectible, broad range 50Hz/3 相专用电压/可连接 110/190V, 115/200V, 120/208V, 110/220V 220/380V, 230/400V, 240/416V	
Approx. Genset Dimensions (LxWxH) (mm) 发电机近似尺寸 (长, 宽, 高) (毫米)	4040x1800x2206		4040x1800x2206
Basic Weight 重量 (Kg)	5471		5766

Note: To obtain KVA rating, multiply KW by 1.25

All generator ratings are based on ISO 8528 standard.

全部发电机之输出马力是根据 ISO8528 为标准。

Prime power ratings are applicable for supplying electric power with intermittent overload capacity of 10% for one (1) hour in any twelve (12) hours of running conforming with BS5514 or ISO 3046 for generator set application. Standby power ratings are applicable for supplying electric power in the event of normal utility failure. No overload capability is available for these ratings. These ratings may be used for continuous service for as long as the emergency may last.

主电力是用间接负载状态下, 再加上 10% 之超额电力, 根据 BS5514 或 ISO3046 发电机标准而定。备用电力是用于取代电流供应, 而没有超额电力供给, 但可用于长时间之紧急电流供应。